

**FlowCon AB**  
DN15/20/25 · 1/2", 3/4", 1"

No. Reference no. Description

**Valve bodies**

- ① ABxx.I Valve body
- ①\* AB25.I.K Valve body (not shown)

**Cartridges/Inserts**

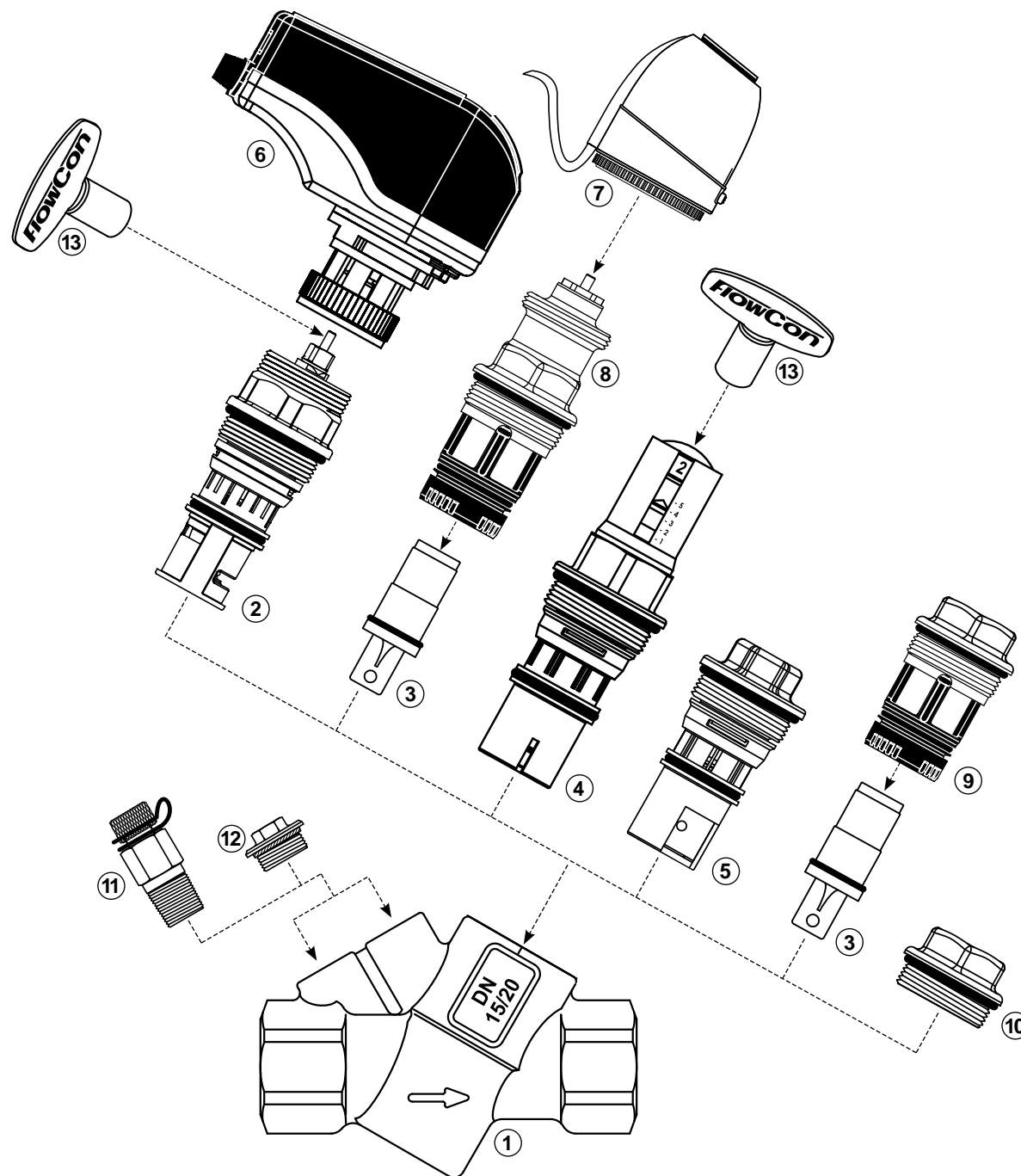
- ② Green.x Green insert
- ③ F360xxx SS cartridge
- ④ E-JUST1.x.x E-JUST cartridge
- ⑤ ABV1.x.x Composite cartridge

**Actuators**

- ⑥ FN.x.x Electrical actuator
- ⑥\* FT.x.x Thermal actuator (not shown)
- ⑦ EV.x.x Thermal actuator

**Accessories**

- ⑧ EVS.0.0.0 EVS insert
- ⑨ ACC0150 Adaptor for SS cartridge
- ⑩ ACC0080 Blind cap
- ⑪ 2 x ACC00101 P/t plug
- ⑫ 2 x ACC1B03000 Plug
- ⑬ ACC0001 Adjustment key



**FlowCon AB**  
**DN25/32 · 1", 1 1/4"**

No. Reference no. Description

**Valve body**

① ABxx.l Valve body

**Cartridges/Inserts**

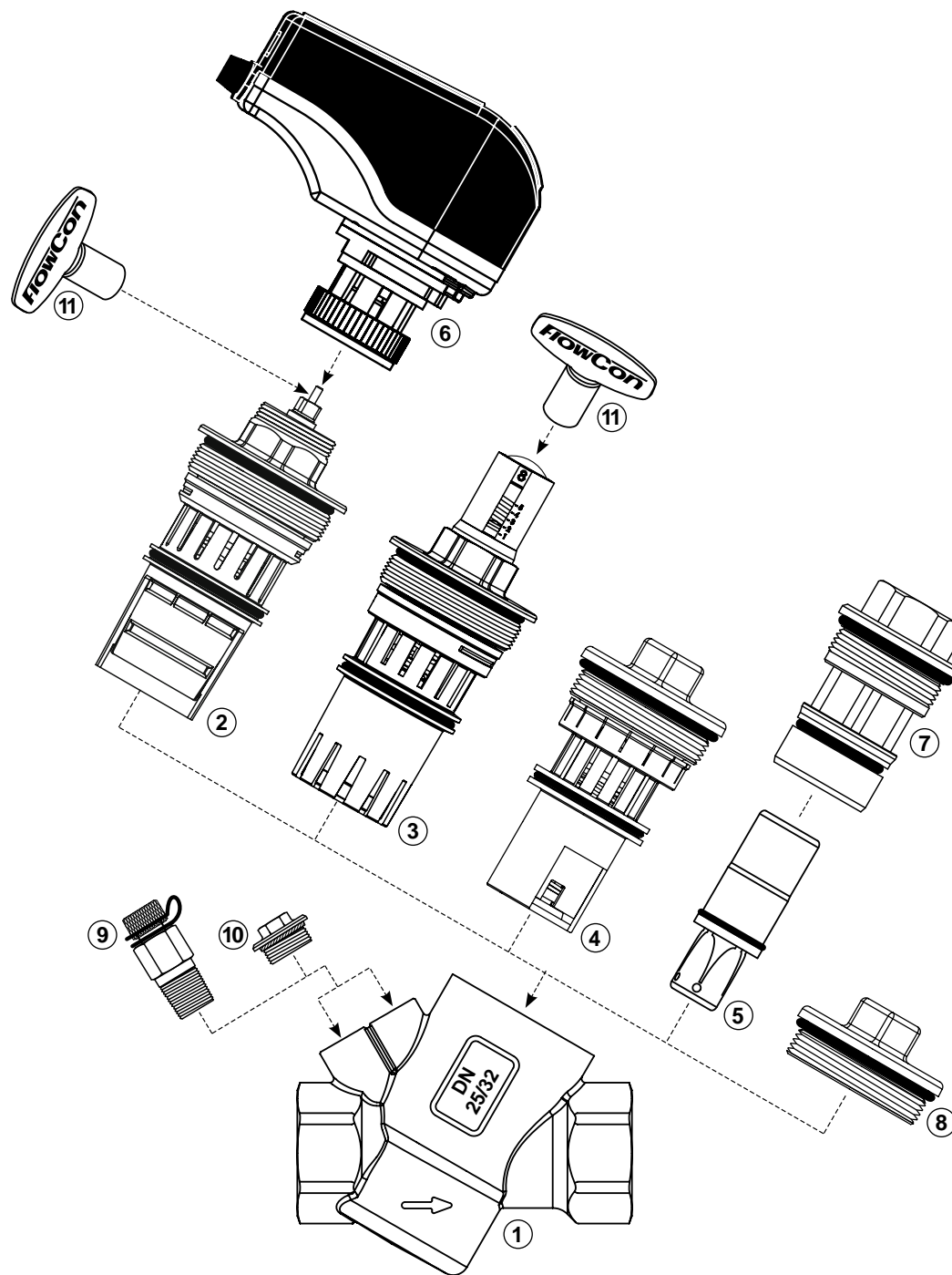
② Green.2 Green insert  
③ E-JUST2.Y.G E-JUST cartridge  
④ ABV2.x.x Composite cartridge  
⑤ F361xxx SS cartridge

**Actuators**

⑥ FN.x.x Electrical actuator

**Accessories**

⑦ ACC0160 Adaptor for SS cartridge  
⑧ ACC0081 Blind cap  
⑨ 2 x ACC00101 P/t plug  
⑩ 2 x ACC1B03000 Plug  
⑪ ACC0001 Adjustment key



**FlowCon AB**  
**DN40/50 · 1 1/2", 2"**

No. Reference no. Description

**Valve body**

① ABxx.I Valve body

**Cartridge**

② E-JUST3.G.B E-JUST cartridge

**Accessories**

③ ACC0084 Blind cap

④ 2 x ACC00101 P/t plug

⑤ 2 x ACC1B03000 Plug

⑥ ACC0001 Adjustment key

